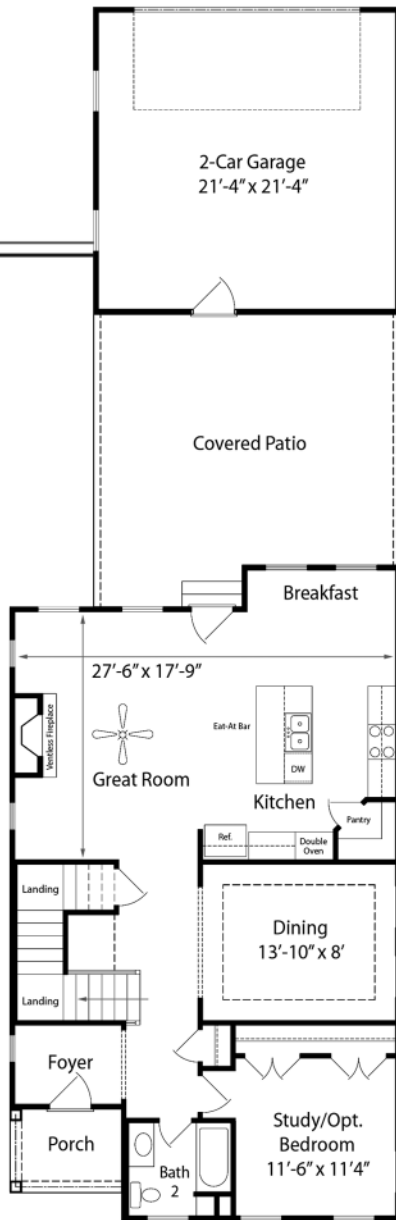


Vienna I.A

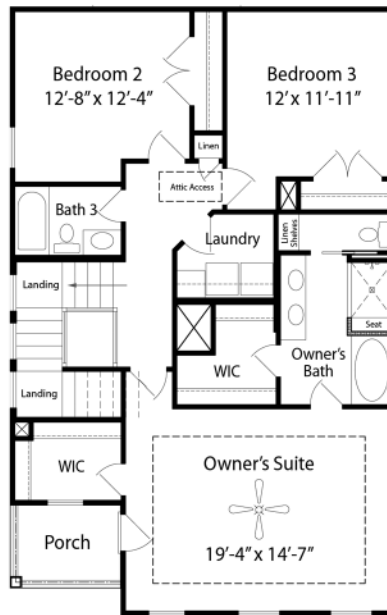
**3 Bedrooms, 3 Baths,
Study/Optional Bedroom 4,
and 2-Car Garage**

2,301 Living Sq. Ft.

APPROX. AREA	
FIRST LEVEL	1,202
SECOND LEVEL	1,099
TOTAL LIVING AREA	2,301
PORCH	96
DETACHED GARAGE	484
TOTAL COVERED	2,881



First Level



Second Level



Regent
HOMES

www.RegentHomesTN.com

Marketed By

COLDWELL BANKER FIRST

Laurel Kenamer

256.759.8859

In the interest of continuous improvement, Regent Homes reserves the right to make modifications in exterior designs, architectural details, materials and specifications at any time without prior notice. Elevation and floor plans may vary per builder homesite. All features, designs, and prices are subject to change without prior notice. Room dimensions are approximate and floor plans may vary with selected elevation. The above illustration is for demonstration purposes only. Please consult working drawings for actual dimensions and information. ©2017 Regent Homes LLC.

All homes built by Regent Homes are built in planned communities that contain deed restrictions, use restrictions and maintenance fees. Please consult your sales representative to obtain an official copy of the deed restrictions.